

City of Spooner Outdoor Parks & Recreation Plan 2015—2019



APPROVED BY CITY OF SPOONER COUNCIL
AUGUST 4, 2015

S:/Engineer/Park/8-05-15CDOOutdoor rec plan.pdf

INTRODUCTION

Leisure time is an important component of people's lifestyles, whether they live in urban centers or sparsely populated rural regions of the country. Shorter working hours, more disposable income, earlier retirement, and longer life spans have led to an increased demand for leisure-time activities, including outdoor recreation. As more and more people participate in outdoor activities, the increased pressures on existing recreational facilities may endanger the environmental qualities that residents and non-residents are attracted to in the first place. Consequently, there is a need to provide for increasing recreational demand while at the same time protecting natural resources for future generations.

Broadly defined, recreation is an activity or experience undertaken solely for the pleasure or satisfaction derived from it. Although recreational preferences may vary from individual to individual, recreation occupies a necessary and significant place in every person's life. It is important to provide a variety of parks and recreational facilities to offer opportunities for participation in a wide range of active and passive recreational pursuits. A primary purpose of the outdoor recreation plan for the City of Spooner, as herein presented, is to outline activities necessary to maintain and develop existing parks and to guide the acquisition and development of land for outdoor recreation activities as needed to satisfy the recreational needs and desires of the population of Spooner.

Overall, this plan is intended to provide direction to the City of Spooner in the development of parks and outdoor recreation facilities. It is an update of and builds upon the *1994 City of Spooner Parks & Recreation Plan, and Addendum 1, 6/3/1997, Addendum 2 2013* and, as such, ensures the continuation of an orderly procedure to identify facilities that are needed, where they should be located, and generally when the facilities should be constructed. In addition, the plan will enable the City to participate in the Land and Water Conservation Fund Program (LAWCON), the Stewardship Local Assistance Programs, and other related funding programs. Both the LAWCON and Stewardship financial aids programs are administered by the Wisconsin Department of Natural Resources and can be used to assist in the construction of new outdoor recreation facilities as well as for the associated construction and improvement of existing recreational facilities.

The final *City of Spooner Outdoor Parks & Recreation Plan* update will be adopted by the City in a properly noticed public meeting which will provide additional opportunities for public input on the City's recreational amenities, goals, and recommendations discussed in this document.

The following material will state the goals and objectives, define certain types of recreation areas, inventory current community supplies of recreation areas and facilities, suggest standards for evaluating their size and subsequent ability to meet recreation needs, and offer an action program to the City designed to eliminate present recreation land deficiencies and to improve existing areas. The coverage and organization of plan content will, hopefully, provide a clear framework from which the City of Spooner can make efforts to meet daily outdoor recreation requirements, protect resources, and provide a more desirable community environment. The plan may allow Spooner to become a more Kid/Family Friendly community.

CHARACTERISTICS OF THE PLANNING AREA

PHYSICAL SETTING

The City of Spooner is located in Washburn County in north-west Wisconsin. The City is 100 miles east of the Twin Cities and about half way between Eau Claire and Superior.

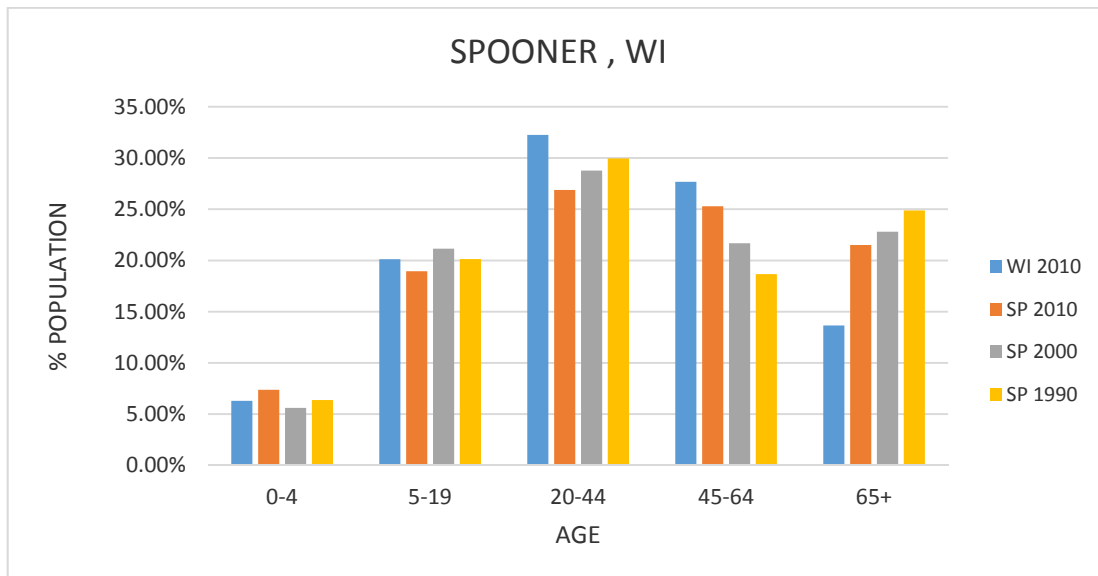
The topography of Spooner is quite irregular, alternating between steep hills and fairly level areas. The Yellow River Flowage is approximately 1066 feet above sea level. The highest areas in the City are about 1200 feet above sea level, the downtown area is about 1090 feet above sea level.

POPULATION

The study of the local population is an important part of the planning process since people are the primary beneficiaries of the planning. Knowledge of the number of people in the planning area and projected changes in the population must enter into the various planning decisions regarding the future of Spooner.

AGE	WI 2010	SP 2010	SP 2000	SP 1990
0-4	6.30%	7.38%	5.62%	6.37%
5-19	20.11%	18.94%	21.15%	20.13%
20-44	32.25%	26.88%	28.76%	29.95%
45-64	27.67%	25.28%	21.67%	18.67%
65+	13.66%	21.51%	22.80%	24.88%

MEDIAN AGE	38.5	41.6	40.7
MEDIAN INCOME	\$51,049	\$26,428	
% Low to Moderate Income		65	



In planning for future outdoor recreation activities and facilities in the City of Spooner, it is important to consider the demographics of current residents. The City of Spooner’s population increased slightly in median age from 40.7 years in 2000 to 41.6 years in 2010. Wisconsin’s median age in 2010 was 38.5 years. Between 2000 and 2010, the City saw an increase in population between 45 and 64, in 2000 21.7 percent in this category and in 2010 25.3 percent, the City of Spooner also experienced a change in individuals that are 65 years of age and older. In 2000, 22.8 percent of the individuals fit into this category, while in 2010, 21.5 percent were 65 years of age and older. Even though the median age of the City is increasing, the number and overall percentage of individuals of retired age in the City decreased. The city saw a significant increase in population under 5 years old, which is encouraging. In 2010, 65 percent of households were low to moderate income.

LAND USE

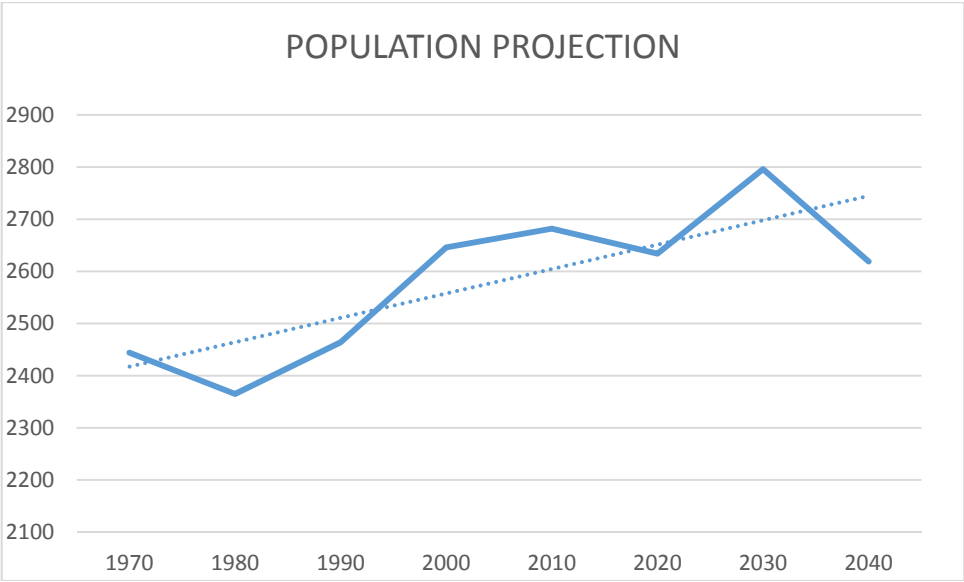
The City of Spooner covers 4.3 square miles at 2,752 acres.

Land Use & Population Projections

Total population for the 54801 zip code is 6,493.

**POPULATION
TREND**

1970	1980	1990	2000	2010	2020	2030	2040
2444	2365	2464	2646	2682	2634	2796	2619



2014 Land Use Profile

Land Use	Acres	%
----------	-------	---

Abandoned Commercial	3.89	0.14%
Group Quarters	4.03	0.15%
Two-Family Residential	10.24	0.37%
Mixed Use	10.71	0.39%
Manufacturing	15.73	0.57%
Wholesaling & Open Storage	17.00	0.62%
Multi-Family Residential	21.09	0.77%
Agriculture/Forest	25.85	0.94%
Manufactured Homes	33.25	1.21%
Other Public / Semi-Public Services	38.70	1.41%
Commercial	96.32	3.52%
Education	105.35	3.85%
Park/Recreation	158.38	5.78%
Transportation	355.90	12.99%
Single-Family Residential	382.49	13.96%
Agricultural Research	383.77	14.01%
Government & Utilities	406.26	14.83%
Vacant/Open	670.60	24.48%

2739.56

Zoning

R-1	251.61	10.81%	
R-2	427.54	18.38%	
R-3	97.9	4.21%	33.40%
C-1	129.66	5.57%	
I-A	426.04	18.31%	
I-B	101.55	4.36%	28.25%
A	892.4	38.35%	

2326.7 1

Total does not include transportation corridors

In the past two decades, much of the newer residential development has occurred in areas where the average lot size is larger than in older neighborhoods. Most of the development has been outside the city limits, but those residents also use the city recreation facilities. As new areas are developed for housing, existing neighborhood parks and playgrounds may no longer be within reasonable walking distance. In such cases, new neighborhood park facilities may be needed to accommodate new growth areas. Currently, there are approximately 170 acres of parkland. 50 acres is in the city proper another 40 in the city limits but with no way to access it without leaving and re-entering the city and 80 acres located 7.75 mile northeast of the city limits.

Over time park facilities have been improved or small Park areas opened, as well as some trail system

improvements completed. But over the last two decades, recreational acreage in the City of Spooner has continued to decrease as a percentage of its overall land base, although much of the recently annexed land is either open or agricultural in nature.

GOALS AND OBJECTIVES

The function of any planning, whether in our personal lives or as a community, is to achieve goals and objectives. Individuals or communities seldom act without implicit goals and objectives; yet plans and actions without goals can often be wasted. Therefore, it is imperative that a community formulates goals (ends) that it hopes to attain. The purpose of this section is to outline the goals and objectives of the community in the area of outdoor recreation.

Goals may be defined as general statements of desirable ends, while objectives are measurable statements of desirable ends. Objectives are usually specific, but at all times they are in harmony with stated goals. As community desires and needs change, so also must goals and objectives. Goals and objectives should be continuously refined.

The following goals and objectives represent the ends that a community may adopt to provide a sound basis for future outdoor recreation planning decisions. In addition to the goals and objectives, several principles are provided to describe why it is important to make serious attempts to attain the adopted goals and objectives.

PRINCIPLES

The provision of public, general use outdoor recreation sites and open spaces contributes to the attainment and maintenance of good physical and mental health, which is desirable for all residents of Spooner. Parks provide opportunities to participate in a wide range of active and passive outdoor recreation activities. Moreover, a park and open space system tied to the natural resource base, such as the existing surface water network, can generate the dual benefits of satisfying recreational demands while protecting and preserving valuable natural resource amenities. Finally, this park system can contribute to the orderly growth of the City by lending form and structure to urban development patterns.

A vibrant park system promotes physical and mental health **both** by providing opportunities to participate in such athletic recreational activities as baseball, basketball, hockey, skiing, and ice-skating, as well as opportunities to participate in less athletic activities as pleasure walking, picnicking, or just rest and reflection. These activities tend to reduce everyday tensions and anxieties and thereby help maintain proper physical and mental wellbeing. Well-designed and properly located public, general use, outdoor recreation sites also provide a sense of community, bringing people together for social and cultural as well as recreational activities. This contributes to the desirability and stability of residential neighborhoods and, therefore, the communities in which such facilities are provided. And, as the City of Spooner grows, the economic importance of the park system for both its residents and for promoting tourism within the community will also grow.

GOALS

- 1 Provide an integrated system of public, general-use outdoor recreation sites and related open space areas, which will allow for opportunity for participation in a wide range of active and passive outdoor recreation activities.
- 2 Preserve sufficient, high-quality, open-space lands for protection of the underlying and sustaining natural resource base for the enhancement of the social and economic well-being and environmental quality of the City.
- 3 Provide a system of public outdoor recreation sites, as well as educational tools and programs, to increase residents' awareness of our natural resources.
- 4 Provide outdoor recreation opportunities both efficiently and economically.
- 5 Provide a mix of affordable, quality outdoor recreation facilities, programs, and amenities at various scales and development intensities which meet the needs of residents while taking advantage of tourism opportunities.

OBJECTIVES

- 1 Provide general-use outdoor recreation sites sufficient in size and number to meet the active and passive recreation demands of the resident population. Such sites should contain the natural resource or man-made amenities appropriate to the recreational activities to be accommodated therein and be spatially distributed in a manner that provides ready access to all residents of Spooner.
- 2 Recognize and reflect the unique roles and other differences between neighborhood versus city-wide parks to best meet resident recreation demands.
- 3 Analyze the current park system to identify gaps in outdoor recreational sites or the potential overlap of recreational service areas. Address these gaps through land acquisition and recreational facility development when feasible and consider alternative uses or sale of small, underutilized parks in areas where sufficient recreational alternatives exist.
- 4 Provide opportunities for rural residents to enjoy the community's parks, natural resources, and recreation areas.
- 5 Preserve and protect land uses adjacent to existing community parks and playgrounds. Consider acquisition of properties adjacent to existing parks as opportunities arise.
- 6 Coordinate the community's recreation program with the programs of other levels of government and with private enterprise to ensure maximum public benefit.
- 7 Provide educational opportunities that increase knowledge and awareness of natural resources, while instilling an environmental ethic in the community.
- 8 Provide access to, and adequate parking for, the use of natural resources.
- 9 Protect scenic values by controlling signage, junkyards, and other unsightly land uses and practices.
11. Provide for the recreational needs of the physically and mentally disadvantaged.
12. Provide for the periodic review and updating for the City outdoor recreation plan so that it will reflect the changing needs of the community's residents.
13. Maintain a program of hiring those people who are the best qualified to fulfill the responsibilities and requirements associated with parks and recreation planning, programming, and maintenance.
14. Consider economic development and tourism benefits when evaluating and planning outdoor recreational facilities.

PARKS AND RECREATION INVENTORY

The first step in developing a recreation planning program involves the inventory of the community's existing facilities. This inventory includes an estimate of the acreage of all parks areas as well as an analysis of the condition of each facility.

By showing the different types of parks that are available, along with their locations, it can be displayed that some areas of the City have an adequate supply of park land and recreational opportunities while other areas lack those same opportunities. This will be addressed further in the needs assessment plan section of this report.

PARKS AND OUTDOOR RECREATION INVENTORY (SUPPLY)

This section provides an inventory of the City's parks and recreation facilities. The inventory is separated by definition as described in the preceding section. In addition, recreation facilities associated with the City's schools are also inventoried and listed under public and parochial school grounds.

The City of Spooner currently maintains eight developed parks within the City limits and one outside of the City. (Map 1) Some provide playground equipment and picnic tables. Others are just for picnicking and relaxation, while still others provide for multiple activities such as baseball, skate boarding, softball, football, basketball, hockey, broomball, skating, hiking, cross country skiing, and snow shoeing. The city also holds two other locations that have been classified as parks but remain undeveloped. One is in the Durand Addition at the end of Em Street, and the other is in the Pines Addition, east of Highway 63 near the intersection of Durability Road and Pine Drive. Many of the parklands have been dedicated to the city through an ordinance relating to subdivision development, whereby the developer commits to the city a percentage of the total land area for park space.

Centennial Park, 0.10 acre (Map 2)

Centennial Park is located at the intersection of Highway 63 (River Street) and Walnut Street. The park features public restrooms, open spring through fall, and picnic tables and benches. The Spooner Garden Club, under the city's Adopt a Park Program, maintains Centennial Park. The park was completely refurbished in 2010, irrigation for the Garden Club plantings was installed in 2013. Surveillance cameras are present. In 2014 a mural was added.

College Street Park, 17.70 acre (Map 3 & Map 1 shows trail system)

Approximately 18 acres in size, College Street Park is located in the northwestern part of the city. It features three major league/little league baseball fields, an unpaved outdoor hockey rink, a free skating rink and a basketball court. The warming house has a changing area, toilet facilities and a concession stand. Included in the picnic area is a shelter with electrical outlets, barbeque rack, drinking fountain, picnic tables, benches and playground equipment. Also available are hiking, mountain biking, cross-

country ski trails, and snow shoe trails. During the winter months, segments of the cross-country ski trails are lighted. The ski trails were developed cooperatively by the City, school district and Glide & Stride Ski Club, which maintains the trail. (Map 4) There is a paved trail connecting the 3 schools that winds through the park on both city and school land. Other features include a Disc Golf Course, which is located on city and school property, and an unofficial sledding hill.

Dale & Vale St Park, 0.30 acre (Map 5)

Located between Bashaw, Dale and Vale streets, this Park lies in the center of the city. It contains small children's playground equipment, picnic tables and a sidewalk. The Spooner Lioness Club originally developed the park.

Eastland Addition Park, 5.00 acre (Map 6)

Eastland Addition Park is located at the intersection of Northland Drive and Badger Street in the eastern portion of the city. This five-acre site features picnic tables, barbeque racks, playground equipment, a skateboard park and a covered shelter. A Pump Bike area is in the planning stages.

First Street Ball Field, 10 acre (Map 7)

First Street Ball Field is located at the intersection of First St and Michigan Street. The city acquired the ball field formerly owned by the school district in 2011. The Cardinals along with city forces have invested many hours and dollars in improving the field and in 2013 the Cardinals raised money to erect a building containing a concession, restrooms and covered viewing area behind home plate.

Triangle Park, 0.20 acre (Map 8)

Triangle Park is located at the intersections of Summit Street and County Highway K (Scribner Street). Containing picnic tables, a picnic shelter, a drinking fountain, a pedestrian bridge and various plantings, the park is maintained by the Spooner Garden Club

Veteran's Memorial Waterfront Park, 2.20 acre (Map 9)

Veteran's Memorial Waterfront Park is located on the Yellow River Flowage along STH 63 in the City of Spooner. Built in 2003, through the efforts of the Spooner Lions Club, the park is owned by the City of Spooner. The park features six 8' x 5 1/2' black granite stones with 750 names on each stone for a total of 3409 veterans' names with strong ties to Spooner. There are also seven flagpoles, 14 black granite benches, a bell tower and floor made up of 6,000 pavers and bricks, many of the pavers are engraved. Other facilities include a picnic area and fishing pier on the Yellow River Flowage near the park. There is a trail from this property to the State Fish Hatchery

Blooming Valley Park, 80 acre (Map 10)

This city park is located outside the city limits at the old airport site north of County Highway A on Blooming Vale Road. It contains two adult softball fields, bleachers and picnic tables for spectator use. Much of the unused portion of this property has been planted with red pine and spruce to provide for a future city forest. East of Blooming Valley Park is the Indianhead Rifle & Pistol Club, housing a shooting range on 80 acres of city land.

Undeveloped Parks

Durand Addition, 1.00 acre (Map 11)

This undeveloped dedicated Park is located at the end of Em Street in the south central side of town. It serves as a drainage area for the subdivision in which it is located. The Park has a large pond that encompasses most of the area, with some mid growth red pine on the south side. The pond may contain wildlife at times, and it could be used for an ice rink.

Pines Addition, 0.60 acres (Map 12)

This undeveloped dedicated Park is located on the west side of Pine Street just south of Durabilt Drive in the south central side of town. In 2014, the city trimmed trees and began mowing most of this area.

Railroad Park, 12.90 acres (Map 13)

The city acquired the former rail yard from Wis. Central Railroad in 2008 in part from an earmark from Dave Obey. The Mayor created a board to plan the park, which has not yet been developed. It is planned that this park would be the hub of the city, providing walking/biking trails, areas for music and festivals, picnic tables, playground equipment and other amenities.

Currently, there is a lighted skating rink in winter and sand volley ball courts. The Park is used for the annual Jack Pine Savage Dash.

A private party owns the Roundhouse and turntable adjacent to this property, and would like to donate the buildings and land (2.5 acres) to the city. In 2015 the city applied for a grant to do additional environmental investigation in order to determine whether or not to accept the donation. Plans for the area are to restore the Roundhouse & Turntable at least to the point of preservation. It has been discussed to use the building as a venue for concerts, art shows and a general community gathering place.

The City received a DNR Stewardship Grant in 2015 to build an ATV Parking lot on the north side of Paulson Drive adjacent to this property.

Possible Parkland

Former City Landfill, 40 acres (Map 14)

The former city landfill is within the city limits in the far southwest corner. It is located one mile west of First St on highway 70 and a quarter mile south of highway 70 on Tower Hill Rd. The parcel is divided by the Yellow River, which is a major natural asset for Spooner. Prior to building the new High School the soccer club had interest in developing soccer fields there. A group of biking/quiet sport enthusiasts, as well as a private party, have recently expressed interest in developing multi-use trails to the property from the city (from the Fish Hatchery trail) without requiring riding on highway 70.

Trails

DNR Hatchery Trail	1/4 mile
School/ City Hiking/Ski Trail	3 mile
School/ City Paved Trail	2 mile
Wild River Trail within City	1 mile

Wild Rivers Trail (Map 15 & 17)

The Wild Rivers Trail is a multi-use four-season recreation trail that traverses Washburn County in a north-south fashion along the abandoned "Soo Line" railroad. Owned by the State of Wisconsin, Washburn County Forestry Department is responsible for all management, development and maintenance activities within the right-of-way. The trail passes through the city providing recreational activities, primarily for ATV'ing, and snowmobiling. Hikers, bikers, horseback riding, and dog sledding may also make use of the trail, but it can be difficult concurrently with the motorized vehicles. A long-term parking lot along Front Street is available for recreational trail users.

Yellow River Flowage (Map 16)

The Yellow River Flowage provides a great recreational area within the city limits. Fishing, boating, canoeing, kayaking, ice skating, snowshoeing, cross country skiing are all viable activities. The city constructed a canoe landing with picnic area on South Front Street in collaboration with the property owner. The city also built steps to the flowage at the Wagon Bridge on South Front to prevent erosion and to allow better access. The Yellow River below the dam is also a great fishery.

PUBLIC & PAROCHIAL SCHOOL PLAYGROUNDS AND ATHLETIC AREAS

These school facilities have not been included in the overall totals for public (City) recreation facilities because they are not accessible to the general public at all times and they are not owned and maintained by the City.

Elementary School, 2 acres. Playground Equipment

Middle School, 4.5 acres. Playground equipment & running track

High School. "City Park" is on land owned by both the city and the high school. Trails run seamlessly over the entire parcel. The school owns 30 acres of open/parkland.

Catholic School, 0.4 acres, playground equipment, basketball court

NEARBY RECREATION FACILITIES OUTSIDE THE CITY

City residents can also take advantage of a diversity of county, state, and other outdoor recreational facilities in the region. These facilities offer additional recreational opportunities for bicycling, cross country skiing, hiking, hunting, boating, fishing and camping.

DNR Beaverbrook Wild Life Area (Map 17)—hunting; cross country skiing (maintained by Glide & Stride), hiking. Access is available south of city on Randall Road, off Wildlife Road, and off Cranberry Marsh Road.

Wild Cat Road Trail (Map 18)—19 miles of trails for mountain biking and hiking

ACCESSIBILITY FOR PERSONS WITH DISABILITIES

All park restroom facilities owned by the City of Spooner are accessible for persons with disabilities and meet ADA standards, including paved walkways.

Centennial Park, Eastland Park, First Street Ball field, Triangle Park, Veterans Memorial Park and Blooming Valley Parks are accessible. College Street Park is accessible, however, getting to the Warming House/concession building can be a challenge due to its depressed elevation compared to the parking area. Cars can drive down to warming house in good weather.

RECREATION NEEDS ASSESSMENT

SPOONER COMPREHENSIVE PLAN

In December 2006, the City of Spooner adopted their updated comprehensive plan. The planning process incorporated a robust public participation process through a steering committee, public opinion survey, focus groups, open houses, and a public hearing. This outdoor recreation plan relied upon and incorporates the public opinions and guidance from the recent comprehensive planning process.

SURVEY RESULTS 2004 Comprehensive Plan

Community Issues & Opportunities

	Important	Neutral	Not Important
Recreational Opportunities	63.4%	30.8%	5.9%
Environmental Quality	80.1%	17.3%	5.7%
Waterfront Protection	60.0%	33.1%	6.9%
Quality of Life	93.9%	5.8%	0.4%
Public Land Management	63.3%	32.4%	4.4%
	Yes	No	Don't Know
Are there adequate Community parks?	62.5%	26.9%	10.5%

The outdoor recreation-related issues, objectives, and strategies found in the comprehensive plan are integrated into various sections of this outdoor recreation plan. Some of these include:

Section 3.6 Bicycle and Pedestrian Transportation. "As a whole, the City of Spooner (plans) a completely interconnected network of pedestrian and bicycle paths, lanes and/or routes." (complete with signage)

Section 4.3.2 Community Facilities, Other Recreational Activities. "While no formal planning has been initiated, the development of paved walking/bicycle paths in and around the city could provide connectivity to our schools, businesses and residential developments. Additionally, the walking/bicycling paths could connect to the Wild Rivers Trail."

Goals and Objectives from Comprehensive Plan

Section 9.4 Planning Actions, Transportation

"Provide for more pedestrian and non-motorized walkways and/or Sidewalks in lesser density population and industrial/commercial area of the city."

Section 9.4 Planning Actions, Utilities and Community Facilities

"Develop a five year capital improvements program for recreational facility improvements and expansion. Develop a pedestrian park in the downtown area on the railroad corridor. Develop a long range plan with

the school for City/College Street Park. Develop a seasonal parks and recreation program. Develop a park along Yellow River on city property. Develop a long range plan for greenways and pedestrian corridors to link parks and other natural features. Grants should be written and submitted to all public and private entities that support efforts like this as well. User groups should also be included for possible funding and support; for example, Little League, Hockey, Soccer, Tennis, Football, Basketball, Garden Club and any interested service organizations. City Administration to work with private land owners to identify parks to be developed that are platted currently and also identify land to be purchased for additional park area development. Consensus has been reached to make all-out effort to purchase and develop railroad property as focal park area of the Downtown Business area. This would include area to be developed that could be used by various festivals, clubs and organizations”

Section 9.4 Planning Actions, Natural and Agricultural Resources

“Consider purchasing and accessing funding to acquire zoned undeveloped areas near rivers as parks. Promote the use of our river and flowage within the city.”

Section 9.4 Planning Actions, Cultural Resources

“Propose a historic district for railroad property and adjacent to downtown. Develop a band shelter in proposed railroad park. Develop a seasonal parks and recreation program for area youth.”

CITY RECREATIONAL NEEDS BY ACTIVITY

One way to identify parks and recreation needs for the City is to assess participation rates and anticipated demand for particular activities and facility improvements.

The types of activities people enjoy and the number of people who engage in the activity are important tools to assess recreational shortfalls for the City of Spooner, though such specific data is not available at the City level and the City has not recently performed such a survey. As an alternative, listed below are the thirty dominant recreational activities and the percentage of people who engage in that activity in our Wisconsin DNR planning region.

WI SCORP Survey by region

Recreation Demand Activity	WI %	NW WI %
Walk for pleasure	85.8	86.6
Family gathering	78.9	74.1
Driving for pleasure	60.3	68.5
Visit wilderness or primitive area	38.3	62.2
Picnicking	56.6	60.9
Boating any type	47.6	56.2
Swimming in lakes, streams, etc.	45.8	52.9
Freshwater fishing	40.7	49.4
Visit a beach	47.3	48.8
Snow/ice activities	44.4	48.7
Motor boating	36.4	44.1
Day hiking	35.0	42.7
Bicycling	49.3	42.6
Warm water fishing	37.0	42.4
Hunting (any type)	21.7	37.3
Drive off-road	25.8	34.5
Off-road driving with ATV	23.4	33.9
Big Game Hunting	19.2	32.7
Developed camping	32.3	30.5
Canoeing	20.5	29.0
Running or jogging	29.4	28.9
Visit outdoor theme park	37.6	28.1
Mountain biking	31.3	27.8
Visit farm or agricultural setting	31.8	27.0
Snowmobiling	18.3	26.5
Visit other water side	26.4	26.4
Swimming in outdoor pool	38.3	24.9
Golf	25.9	23.4
Small game hunting	14.5	23.1
Off-road SUV	17.7	22.7

Plan Recommendations

PRIORITIES:

- To support **economic development** in Spooner. To entice families to move here and companies to build here, we need to provide outstanding recreational activities. Spooner citizens are striving to make Spooner a kid & family friendly community.
- Focus on becoming known as a “**silent sports**” community and attract bikers, hikers, canoers, kayakers, and skiers.
- Showcase the **Yellow River** through increased access and trails.
- Recognize **College Street Park (or “City Park”)** as the **jewel** of our park system and protect for future generations. It is used for running, walking, skiing, snowshoeing, mountain biking, skateboarding, baseball, softball, hockey, skating, and more. The park is the green space for all city residents, but it also draws people from outside the city to hike, ski, or mountain bike, for example.
 - “I see “city park” as the centerpiece of the city” says Martin Jarvis, resident.

PROPOSED PROJECTS:

- Pump Bike Track (requirements: dirt, bobcat, good permanent water source and hose)
- Hockey Arena
- Bike trail (paved or crushed limestone) from Fish Hatchery to old city landfill
- Campground on old city landfill
- Bike trail connecting Beaverbrook Wildlife to Section XX Mountain Bike Trails
- Bike trail connecting Spooner and Shell Lake; Bike Trail connecting Spooner to Shell Lake (ultimately could circle both lakes with Spooner in the middle)
- Tennis Courts
- Splash Park and/or Outdoor Swimming Pool. Research possibility of restoring swimming at the flowage.
- Basketball Court and/or skateboarding near a new police station. (Kids behave better and good for kid/cop relations.)
- Additional geocaches in the parks.
- Signage identifying bike routes/trails through city (current and proposed)
- Nordic Skate Track on Randall Lake
- Summer Parks & Rec Staff person
- Friends of the Spooner Parks group

- Assess and improve signage identifying parks. Consider other methods of promoting parks, such as a brochure or public service announcements.
- Playground for seniors, featuring equipment such as outdoor elliptical, static bikes, and other equipment to promote balance. (Spooner area has high percentage of seniors; this would promote health and community).
- Community Gardens. Either a space with plots & water for citizens to plant, or gardens planted by volunteers to provide produce for anyone to take. Could be in parks or vacant land.
- Add art/sculptures to our parks where appropriate and when fiscally possible

SPECIFIC PARK NEEDS & PROPOSALS

Centennial Park

- HVAC improvements to restroom to allow year-round use
- Informational Kiosk/Sign
- Bike Rack

College Street Park

- Unplat roads through park, protecting it from disruption of trail system.
- Create a Friends of the park(s) organization
- Pursue purchase of land parcel north of power line/west of school.
- New Warming House/Concession Building. And/or permanent bathroom.
- Repairs to Hockey rink
- Post signs prohibiting motorized vehicles (ATVs will use trails and say “it’s not posted”). Increase enforcement. Erosion & ruts are becoming an annual maintenance problem.
- Identify/sign the 6+ miles of snowshoe/single track bike track and include in regular mowing of trails.
- Maintain baseball fields.
- Remove invasive species, such as Buckthorn, which will overtake other vegetation.
- Protect and promote the meadow north of parking area as excellent habitat for butterflies.
- Update maps and add additional signage for maps. Specifically show groomed ski trails, walking path, start to disc golf course.
- Assess adequacy of parking for all uses.

Dale & Vale St. Park

- Promote its emphasis on small children through better signage, a connection to the library, and possibly a theme for the park.

Eastland Addition Park

- Repair wooden skate features
- Close in gabled end of shelter
- Off street parking

First Street Ball Field

- Improve off street parking

Triangle Park

- Plant mid-size shrubs along busiest side of park for buffer against traffic.

Veteran's Memorial Waterfront Park

- Possible location for a "senior playground"?
- Large picnic shelter with electric and water.

Blooming Valley Park

- Rethink official name to one that lends more to the theme of the park.

Durand Addition

- Place a bench/picnic table by pond.

Pines Addition

- Build playground equipment

Railroad Park

- Create a state of the art park which will be the hub of Spooner.
- Purchase Roundhouse & turntable & renovate
- Implement RR park plan (separate plan and Railroad Park Board)
- Start planting shade trees when know layout of park.
- Purchase old P.O. to restore greenspace, connection to downtown, and visual appeal of Depot and park.
- Create noise/dust barriers from ATV trail (such as staggered shrubbery)

FUTURE PARKLAND IDEAS

Former City Landfill (West of city on river)

- Multi-use quiet sports trail to connect city to property with bridge across river
- Canoe Landing
- Campground

Park near new Hospital

Park on old hospital site if other use(s) not found

OTHER TRAILS

Trails (Existing trails in bold, *and ideas for new trails and improvements in italics*)

- **DNR Hatchery Trail 1/4mile**
- *Connect Hatchery trail to former city landfill and to College Street Park*
- **College Street Park hiking/ski/snowshoe/mountain bike trails 3 miles**
- **School/City Paved Trail (College Street Park) 2 miles**
- **Wild River Trail within City 1 miles (*addition of parallel paved trail*)**
- *Add bicycle lane parallel (paved or limestone)*
- *Connect to Wildcat System through Beaver Brook Wildlife*
- *Consider bikers and walkers whenever doing work on city streets so safer and promote biking/walking. Currently a dangerous city to ride in.*
- *Promote/improve our “green belt”, which runs from water tower through park to middle school, through DNR to Fish Hatchery [need safe crossings on 70 and 63], cross 63 to Wild Rivers Trail, north to Cornerstone Church, then West (mainly on streets here) to elementary school and back into park.*
- *Pursue a bike trail linking Spooner and Shell Lake (realizing that biking is not compatible with ATV use of Wild Rivers Trail). Ultimately the trail could go around both Spooner Lake and Shell Lake, with the city of Spooner as its hub. It could be a mix of new trail and safe road routes (such as Highway K).*

Waterways & Lakes

- Yellow River Flowage—canoeing & other boats; ice fishing
 - *New landing at landfill*
 - *Promote use of landings and waterway on Yellow River.*
 - *Improve public access points and pedestrian use*
 - *Improve boat landing/moorings.*
- Winter Lake Use
 - *Groom a Nordic skate track on Randall Lake (public access?)*
 - *Maintain pond hockey on pond by Tony’s*
 - *Ice motorcycle races*

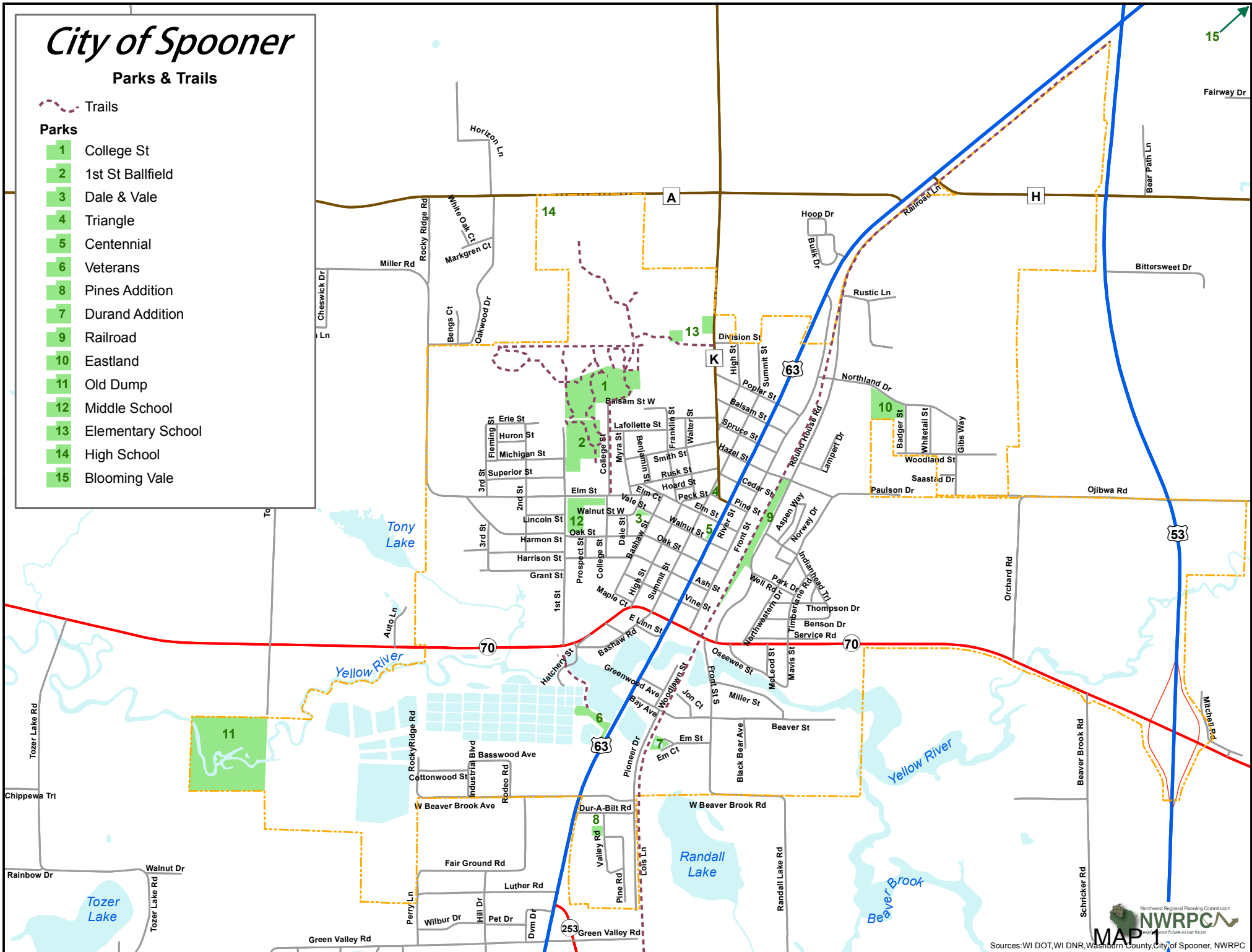
City of Spooner

Parks & Trails

 Trails

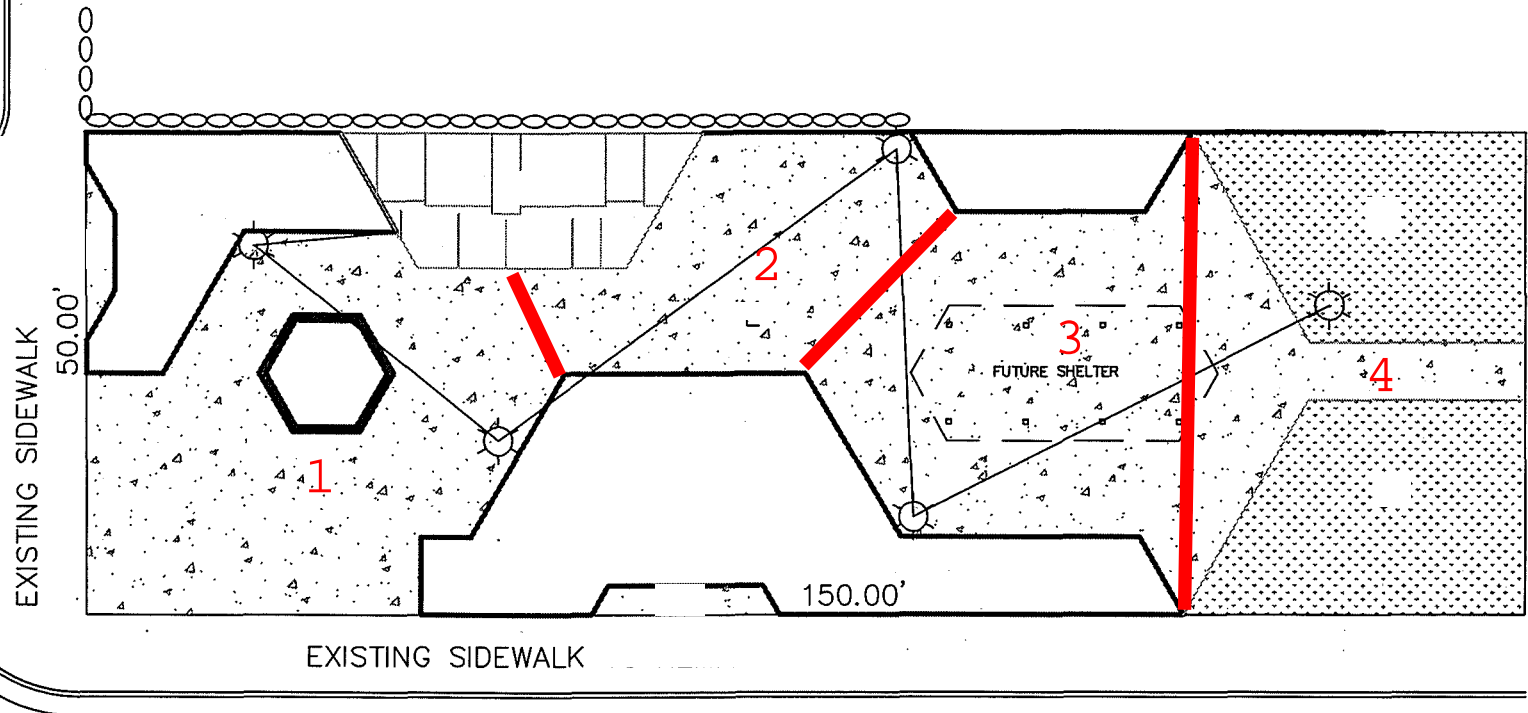
Parks

-  1 College St
-  2 1st St Ballfield
-  3 Dale & Vale
-  4 Triangle
-  5 Centennial
-  6 Veterans
-  8 Pines Addition
-  7 Durand Addition
-  9 Railroad
-  10 Eastland
-  11 Old Dump
-  12 Middle School
-  13 Elementary School
-  14 High School
-  15 Blooming Vale

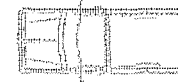
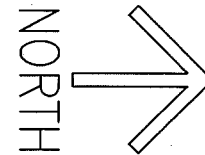


WALNUT STREET

CENTENNIAL PARK

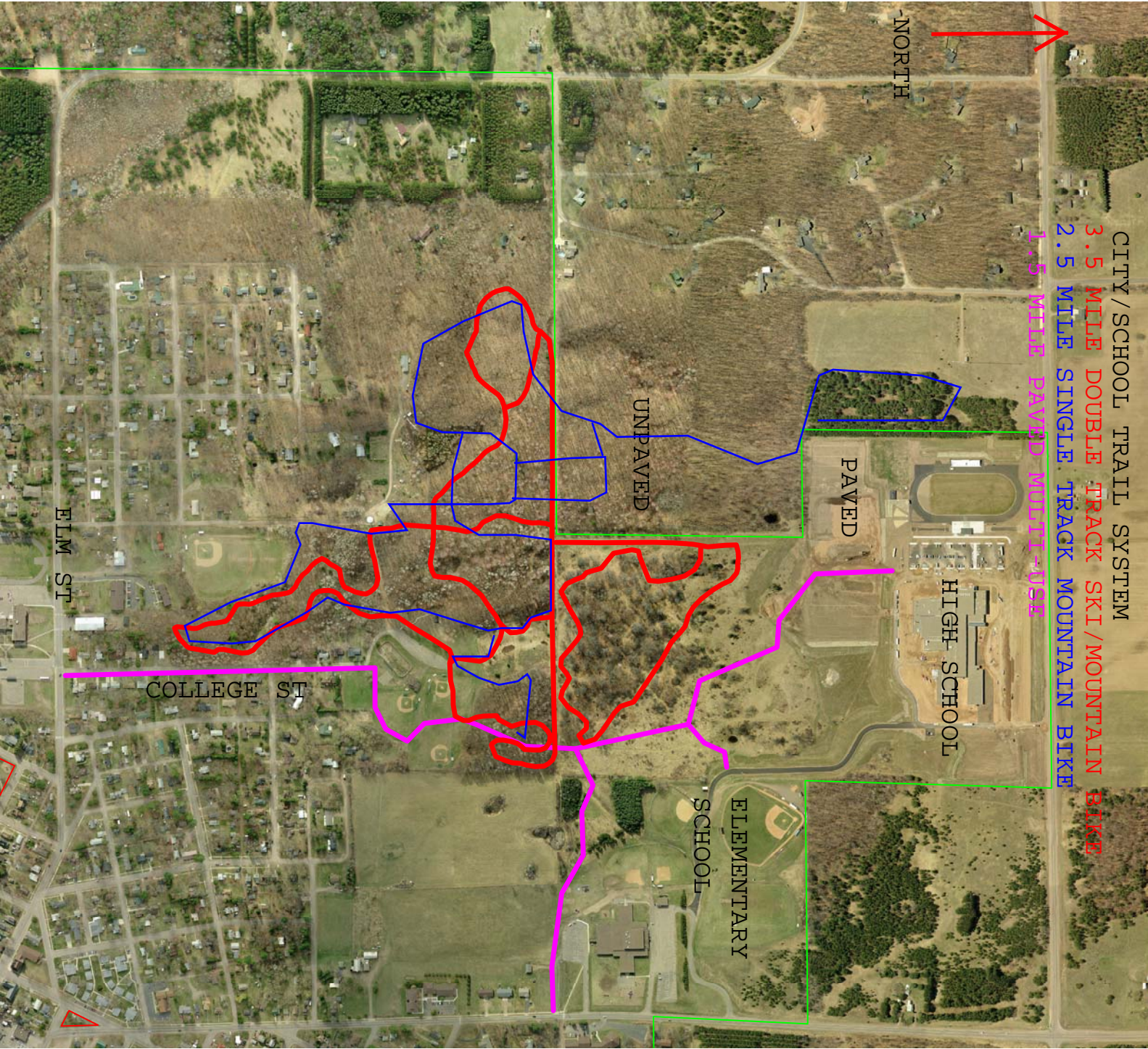


RIVER STREET



STREET LIGHTS 20' DIRECT BURY
APPROX 185' 1 1/2" CONDUIT LIGHT TO LIGHT
APPROX 60' 2" CONDUIT TO FUTURE SHELTER

**DIVISION OF SPACE FOR PARK USE PERMITS
AREAS 1,2,3,4 NOTE AREA 4 IS A COMMON
AREA AND ALL AREAS REQUIRE ACCESS TO
FACILITIES**





3-42

CSM 15-108

1

CSM

CSM

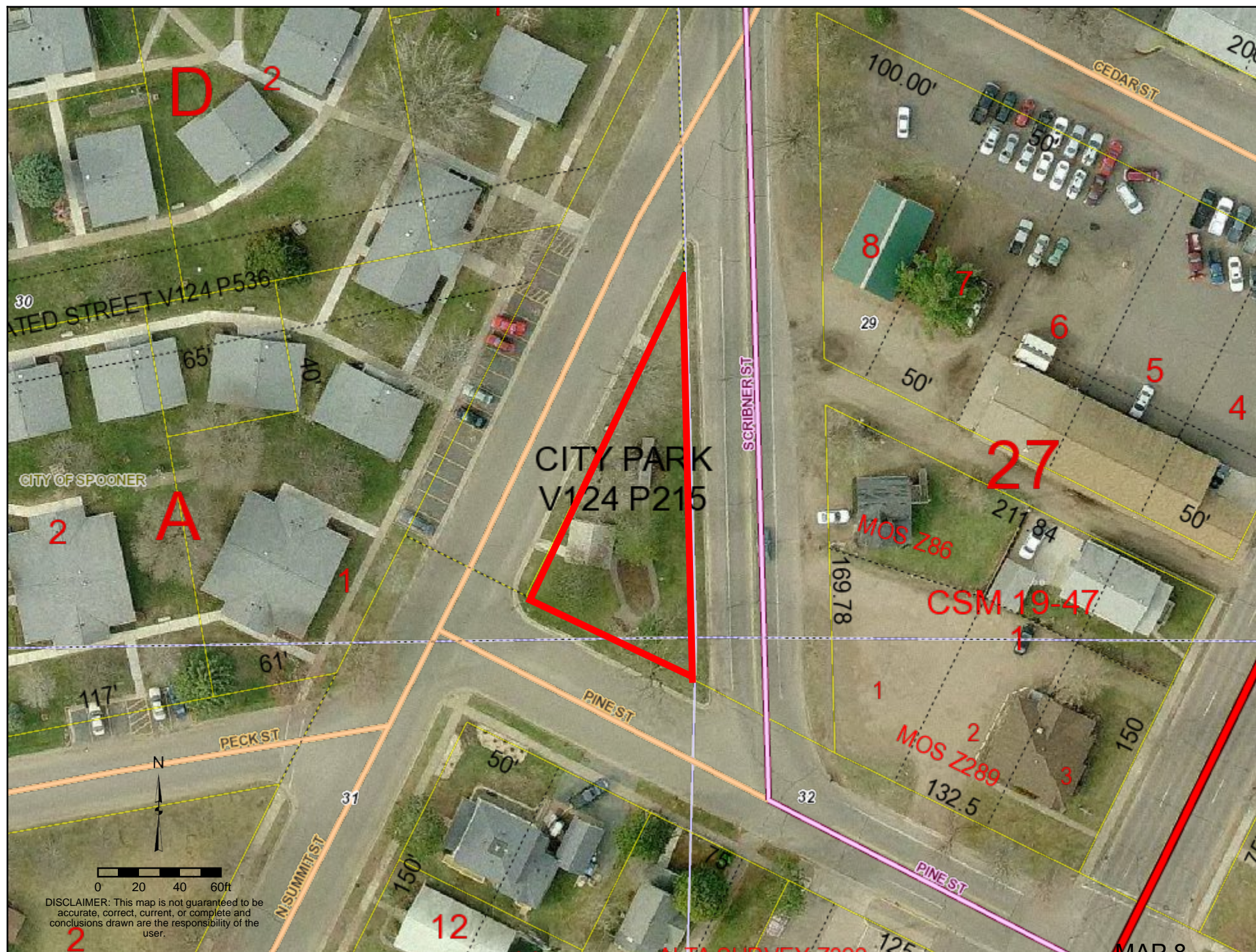
CSM

DISCLAIMER: This map is not guaranteed to be accurate, correct, current, or complete and conclusions drawn are the responsibility of the user.

SPOONER

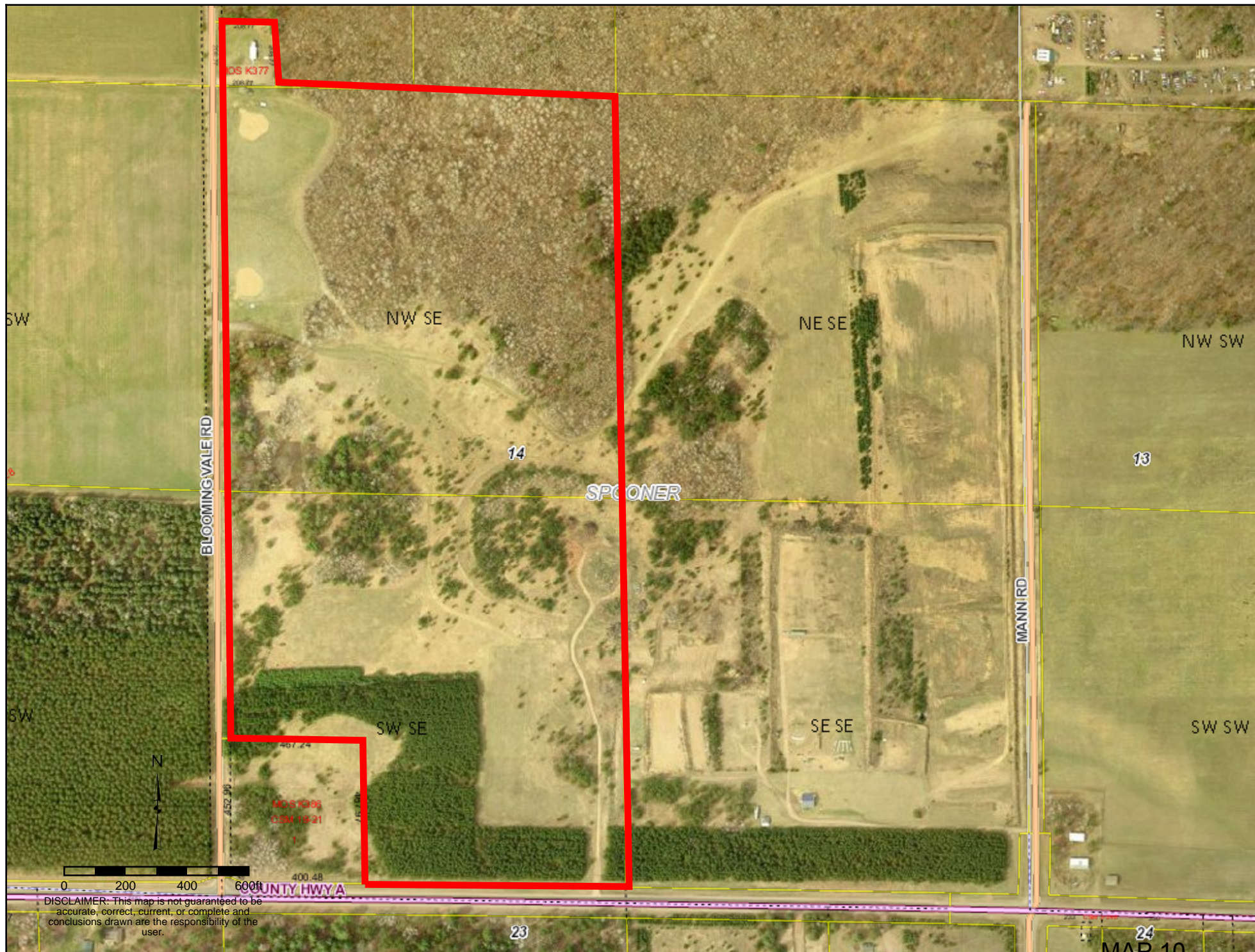
MAP 6



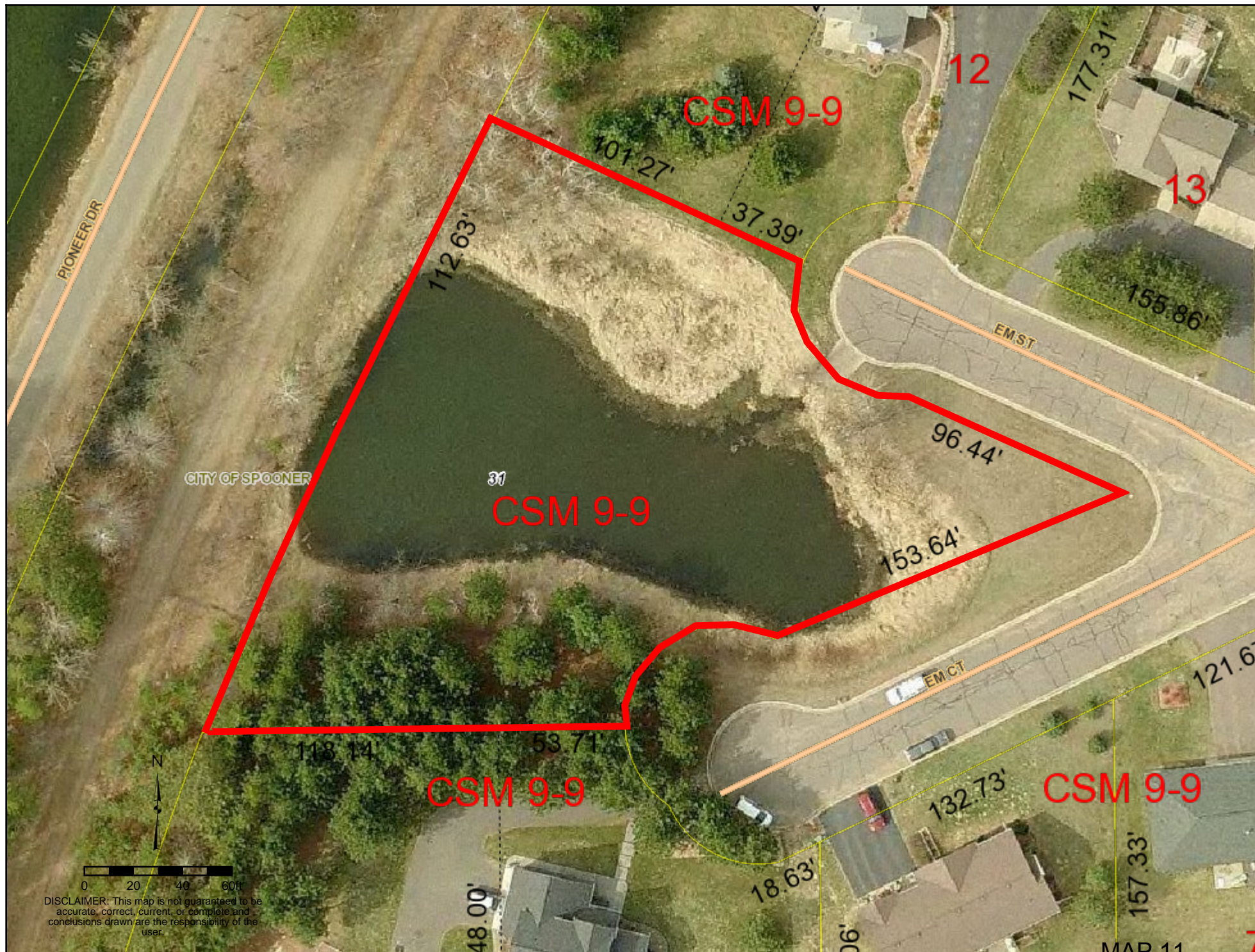




DISCLAIMER: This map is not guaranteed to be accurate, correct, current, or complete and conclusions drawn are the responsibility of the user.

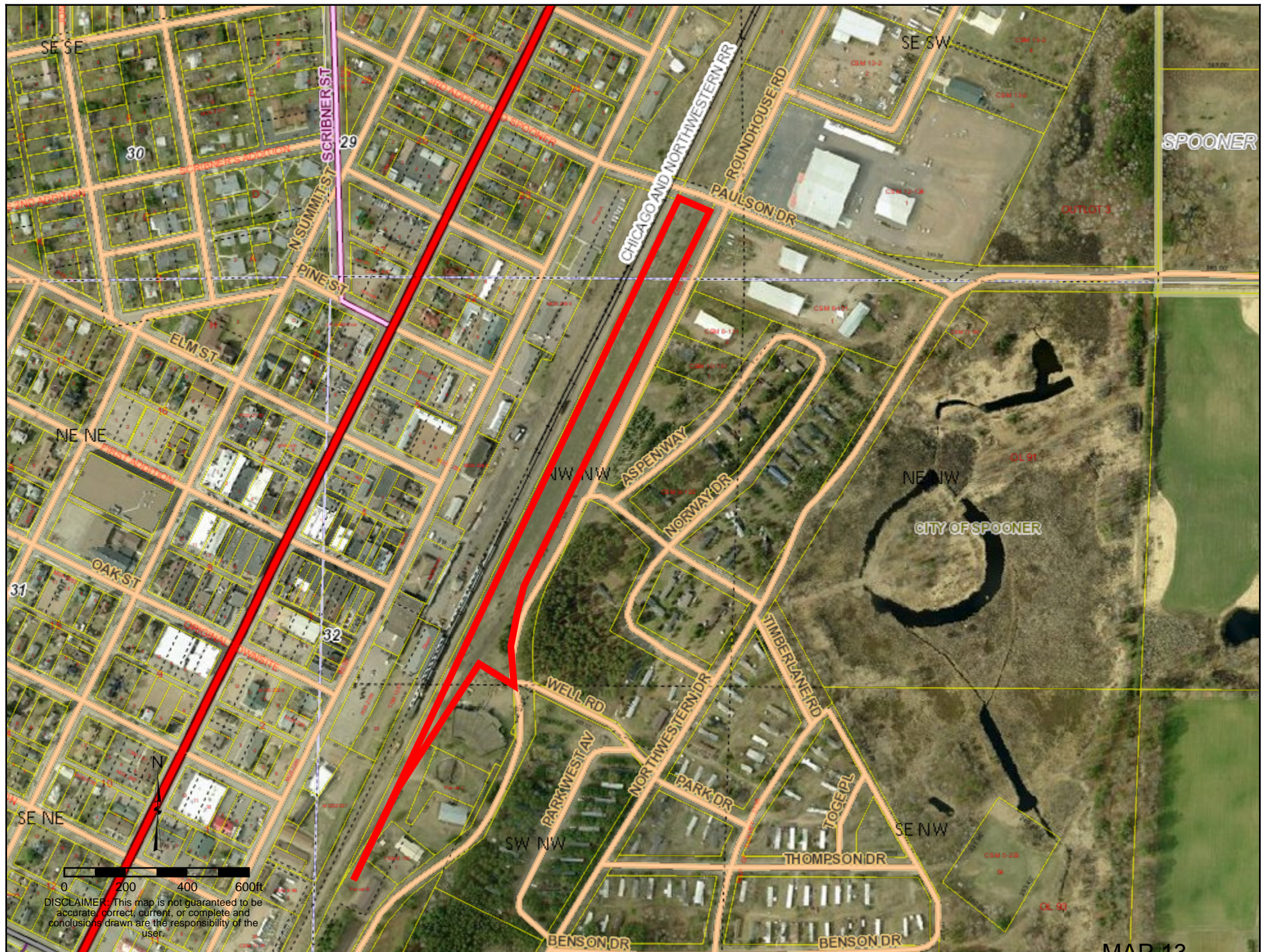


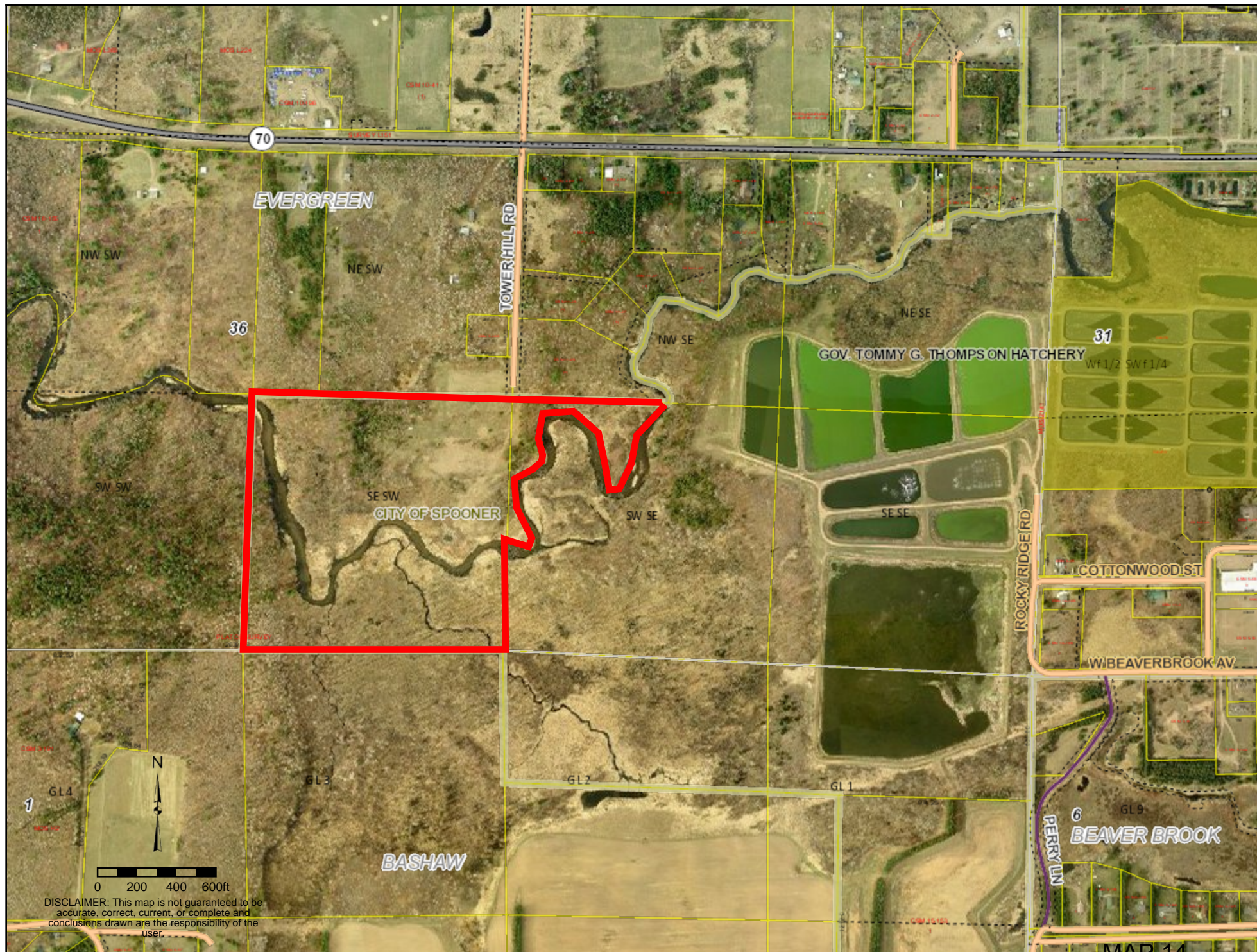
DISCLAIMER: This map is not guaranteed to be accurate, correct, current, or complete and conclusions drawn are the responsibility of the user.





DISCLAIMER: This map is not guaranteed to be accurate, correct, current, or complete and conclusions drawn are the responsibility of the user.





Washburn County, WI


Legend

- Cities (Scale above 25K)
- Villages (Scale above 25K)
- Towns (Scale below 150K)
- Washburn County
- Surrounding Counties
- Lakes and Rivers
- Rivers and Streams
- US Highways
- State Highways
- County Roads (Scale below 100K)
- Town Roads (Scale below 150K)
- City/Village Streets (Scale below 80K)
- Private Roads
- Forest Roads
- Other Roads
- Railroads
- County Lands
- State Lands
- Federal Lands
- Boat Landings
- ATV and Snow Trails
- Horse Trail
- Totogatic Ski Trail
- Nordic Ski Trail

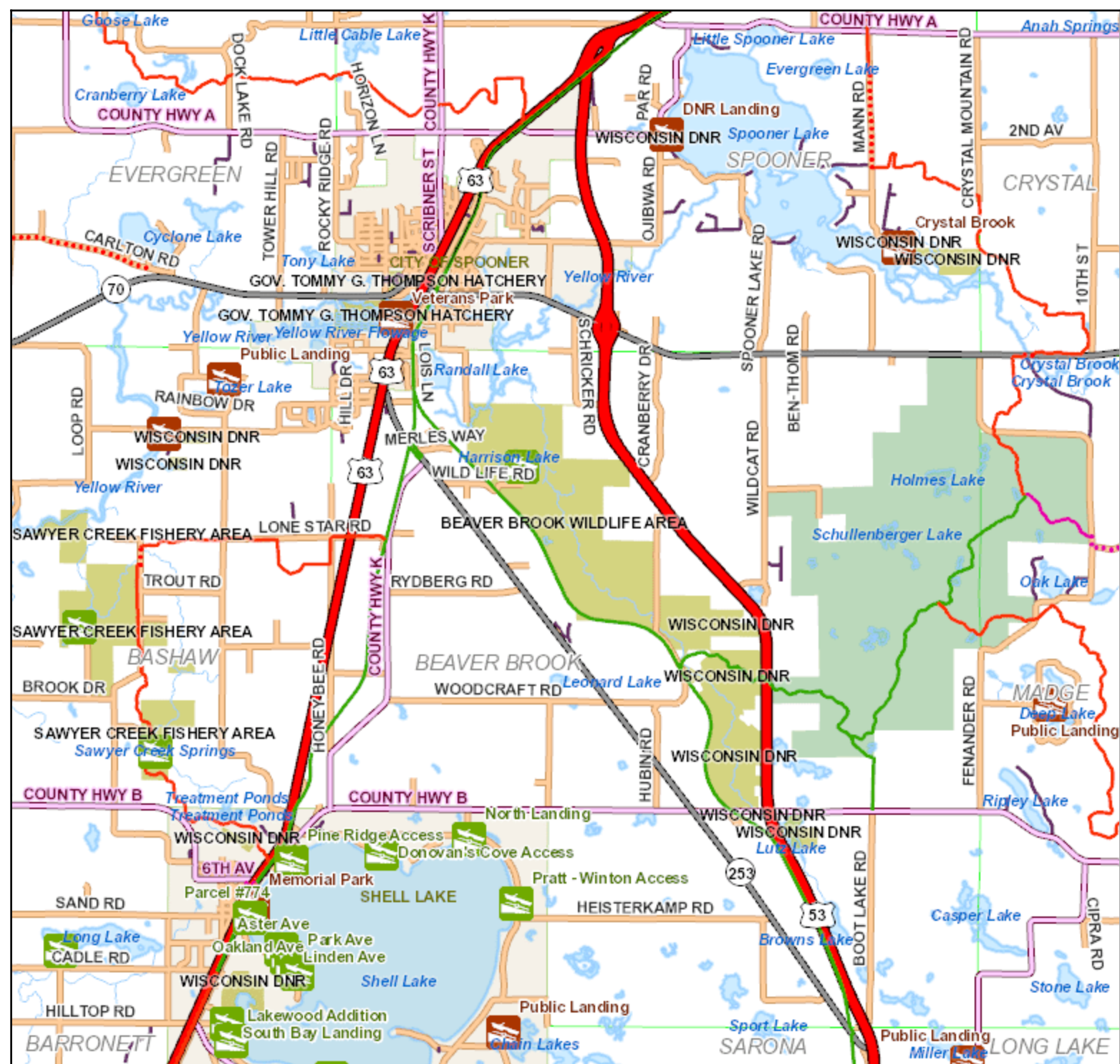


0 2000 4000 6000ft

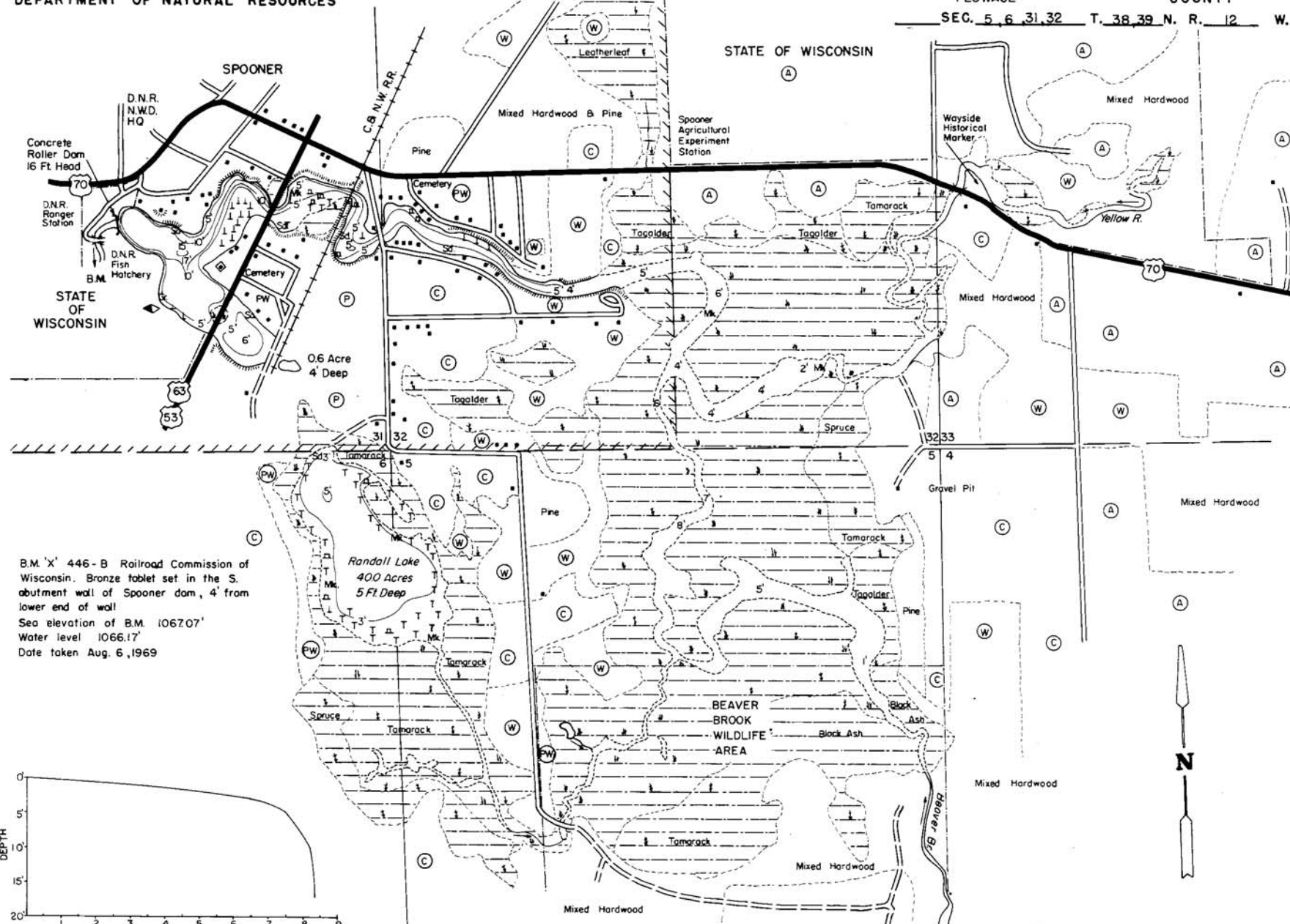
DISCLAIMER: This map is not guaranteed to be accurate, correct, current, or complete and conclusions drawn are the responsibility of the user.

Author:	
Date Printed: 02/15 3:36 PM	
Sources:	

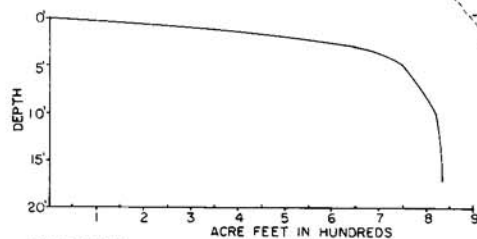
MAP 15



STATE OF WISCONSIN



B.M. 'X' 446-B Railroad Commission of Wisconsin. Bronze tablet set in the S. abutment wall of Spooner dam, 4' from lower end of wall.
Sea elevation of B.M. 1067.07'
Water level 1066.17'
Date taken Aug. 6, 1969



EQUIPMENT RECORDING SONAR MAPPED MAY 1965
MONTH YEAR
LAKE BOTTOM SYMBOLS

TOPOGRAPHIC SYMBOLS		LAKE BOTTOM SYMBOLS	
(B) Brush	Steep slope	P. Peat	⬢ Boulders
(PW) Partially wooded	— Indefinite shoreline	Mk. Muck	⬢ Stumps & Snags
(W) Wooded	— Marsh	C. Clay	⬢ Rock danger to navigation
(C) Cleared	— Spring	M. Marl	⬢ Submergent vegetation
(P) Pastured	— Intermittent stream	Sd. Sand	⬢ Emergent vegetation
(A) Agricultural	— Permanent inlet	Sl. Silt	⬢ Floating vegetation
B.M. Bench Mark	— Permanent outlet	Gr. Gravel	⬢ Brush shelters
(D) Dwelling	— Dam	R. Rubble	
(R) Resort	— D.N.R. State owned land	Bc. Bedrock	
(C) Camp			

660' 0' 660' 1320' 1980' 2640'
SCALE

◆ Access ◆ Access with Parking ◆ Boat Livery

Drawn by: C. Hall
Field work by: S. Johannes, C. Busch, I. Sather

SPECIES OF FISH		
	Abundant	Present
Muskie		
N. Pike	X	
Walleye	X	
L. M. Bass	X	
S. M. Bass	X	
Panfish	X	
Trout	X	

WATER AREA 3440 ACRES
UNDER 3 FT. 75 %
OVER 20 FT. 0 %
MAX. DEPTH 17 FEET
TOTAL ALK. 87 P.P.M.
VOLUME 832.9 ACRE FT.
SHORELINE 750 MILES

MAP16

BEAVER BROOK WILDLIFE AREA

WASHBURN COUNTY

PLEASE RESPECT LANDOWNERS' RIGHTS AND OBSERVE ALL PROPERTY POSTINGS

See map legend for the activities allowed on the property or contact the DNR Service Center for more property information. For more information on the Voluntary Public Access program go to dnr.wi.gov and search for "VPA".

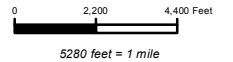
For more information:
PROPERTY MANAGER
C/O SPOONER SERVICE CENTER
810 W MAPLE ST
SPOONER, WI 54801
715-635-4091

DNR Managed Land

- Open DNR Wildlife Land
- Other DNR Land

Easement Use

- Hunting and Fishing
- Fishing Only
- Hunting Only
- Open, No Hunting or Fishing
- Voluntary Public Access
- Seasonally Closed
- Ice Age Trail
- State Trail
- Boat Access - Ramp
- Boat Access - Carry In
- Parking Area



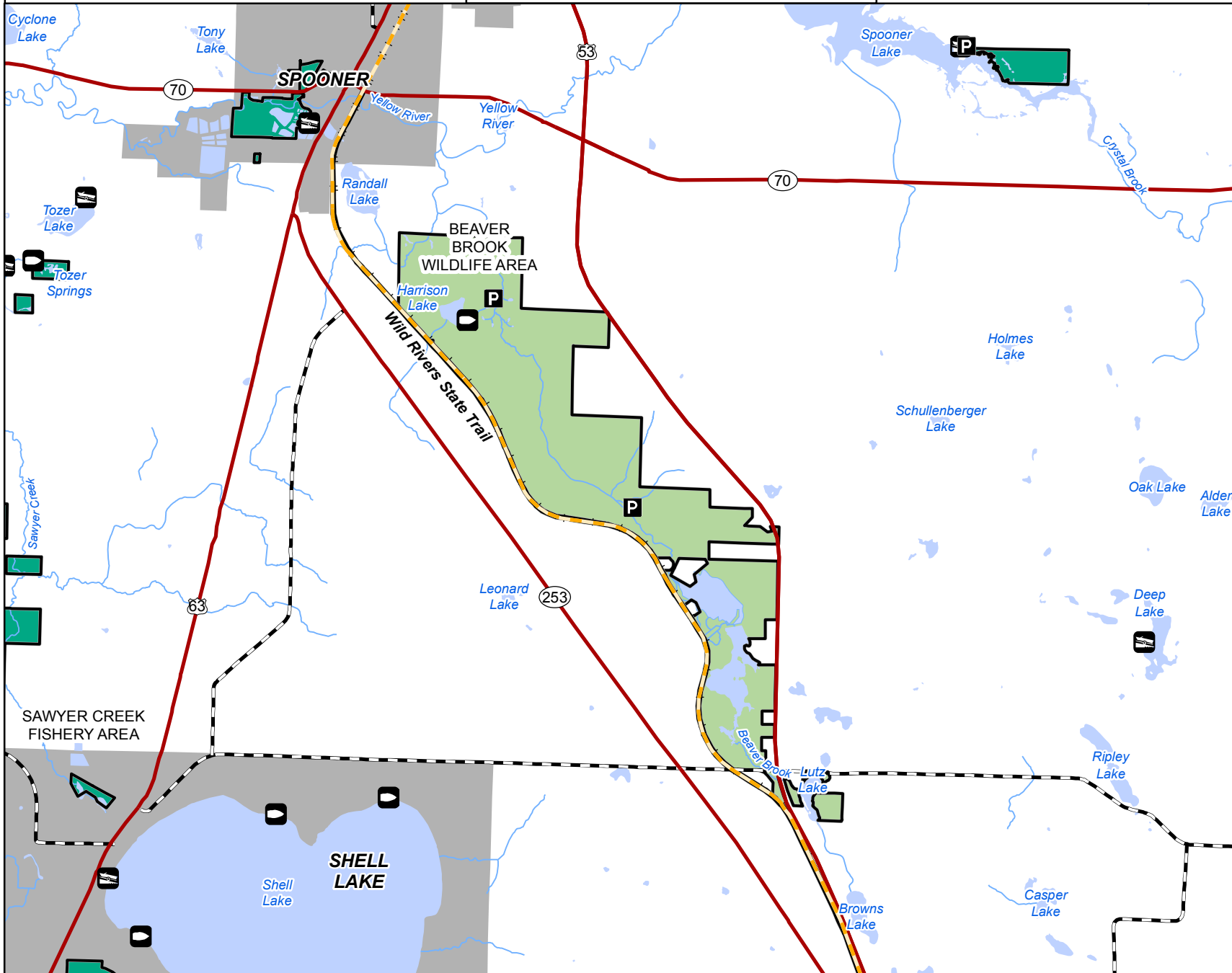
The data shown on this map have been obtained from various sources, and are of varying age, reliability and resolution. This map is not intended to be used for navigation, nor is this map an authoritative source of information about legal land ownership or public access. Users of this map should confirm the ownership of land through other means in order to avoid trespassing. No warranty, expressed or implied, is made regarding accuracy, applicability for a particular use, completeness, or legality of the information depicted on this map.

Wisconsin Department of Natural Resources

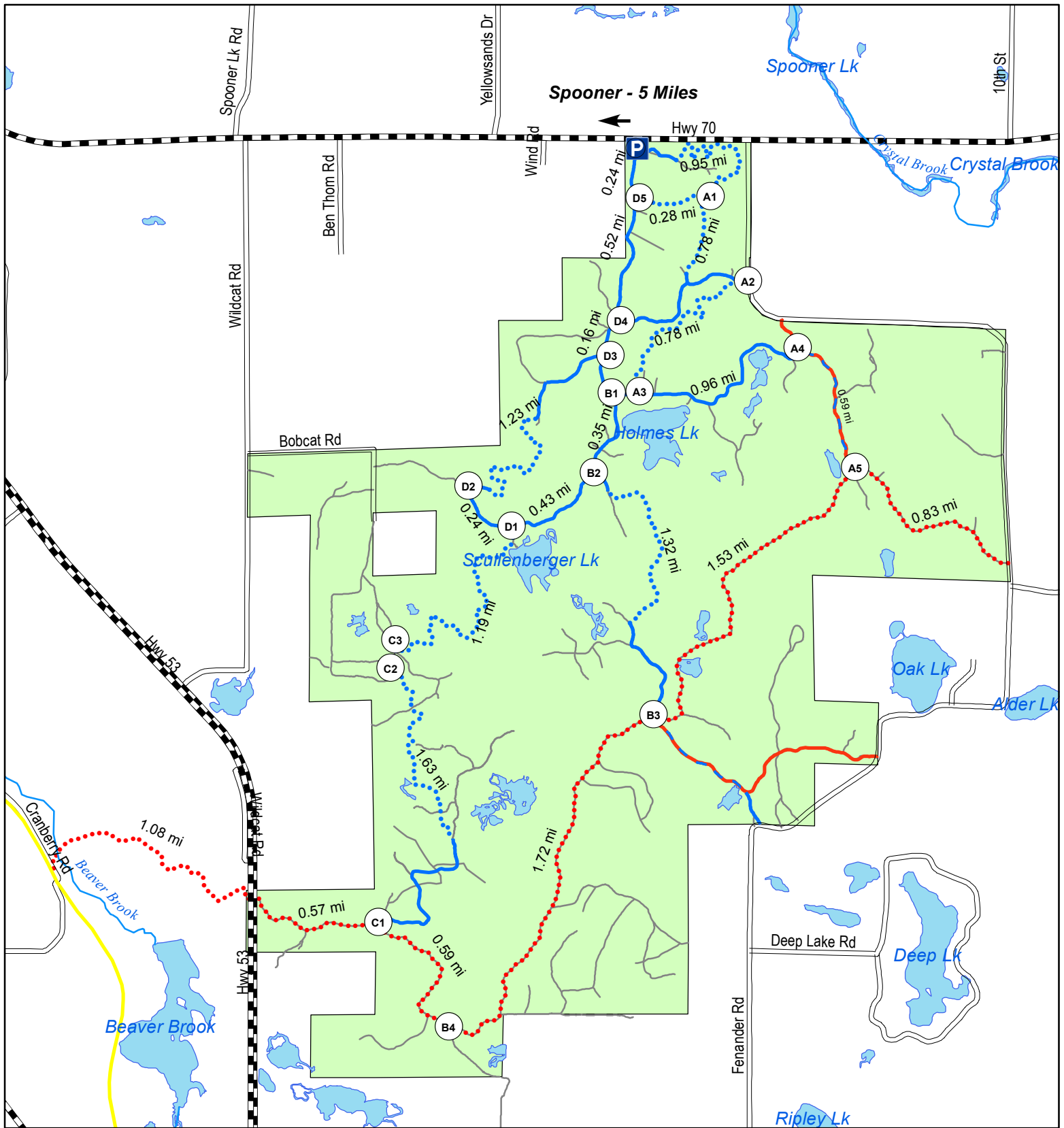


Featured property funded in part by
Knowles-Nelson Stewardship Fund
WM-7130 kmh

Last Revision Date: January 27, 2015
MAP 17
dnr.wi.gov



Wildcat Mountain Bike Trail



Legend

- State Highway
- Township Road
- Dual Use (ATV Trail)
- Single Track
- Dual Use (snowmobile Trail)
- Trail
- Snowmobile Trail
- Other Forest Trails
- County Forest
- Parking
- Map Sign Locations

19 total trail miles

0 0.25 0.5 1

MAP 18

